





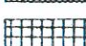
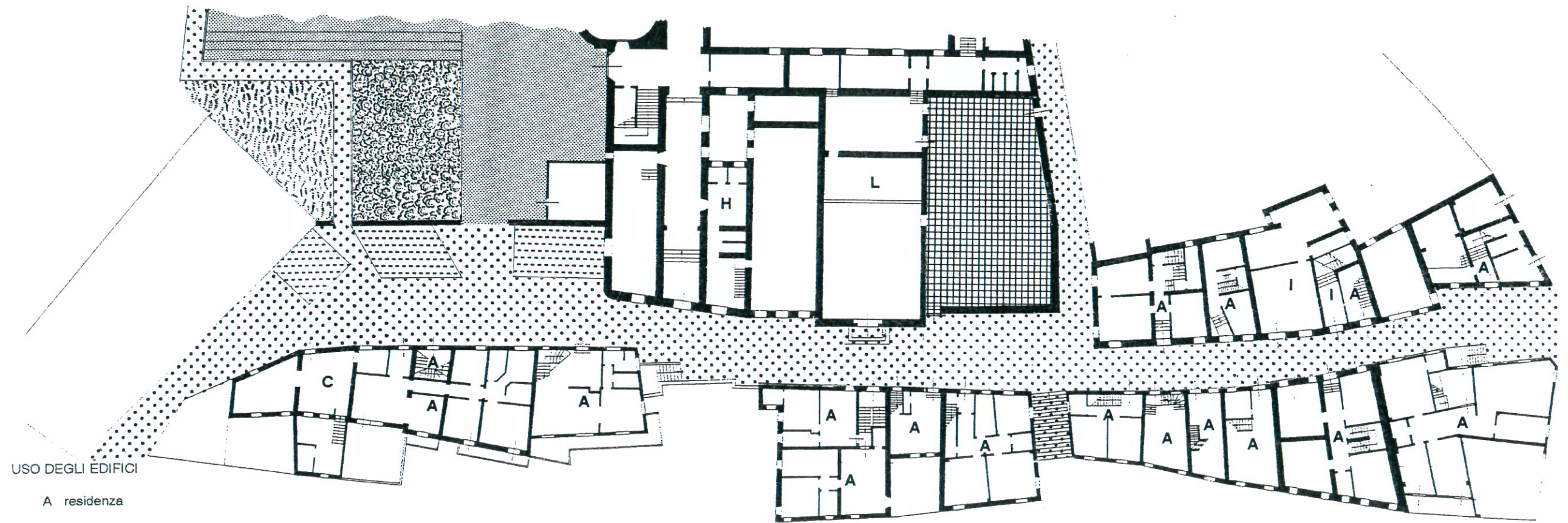
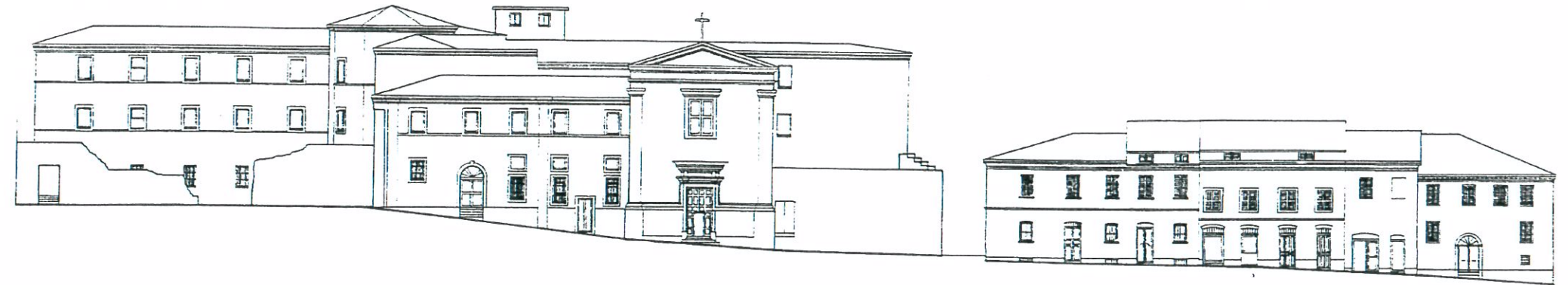


AREA UNITARIA "VIA FRATELLI ROSSELLI" - uso del suolo -

USO DEL SUOLO

-  area pubblica
-  parcheggi
-  orti
-  verde pubblico
-  verde privato
-  cortile pubblico
-  cortile privato



USO DEGLI EDIFICI

- A residenza
- B negozio
- C laboratorio
- D bar-ristorante
- E biblioteca
- F banca
- G associazioni
- H scuola
- I ufficio
- L edificio religioso
- M autorimessa
- N magazzino

